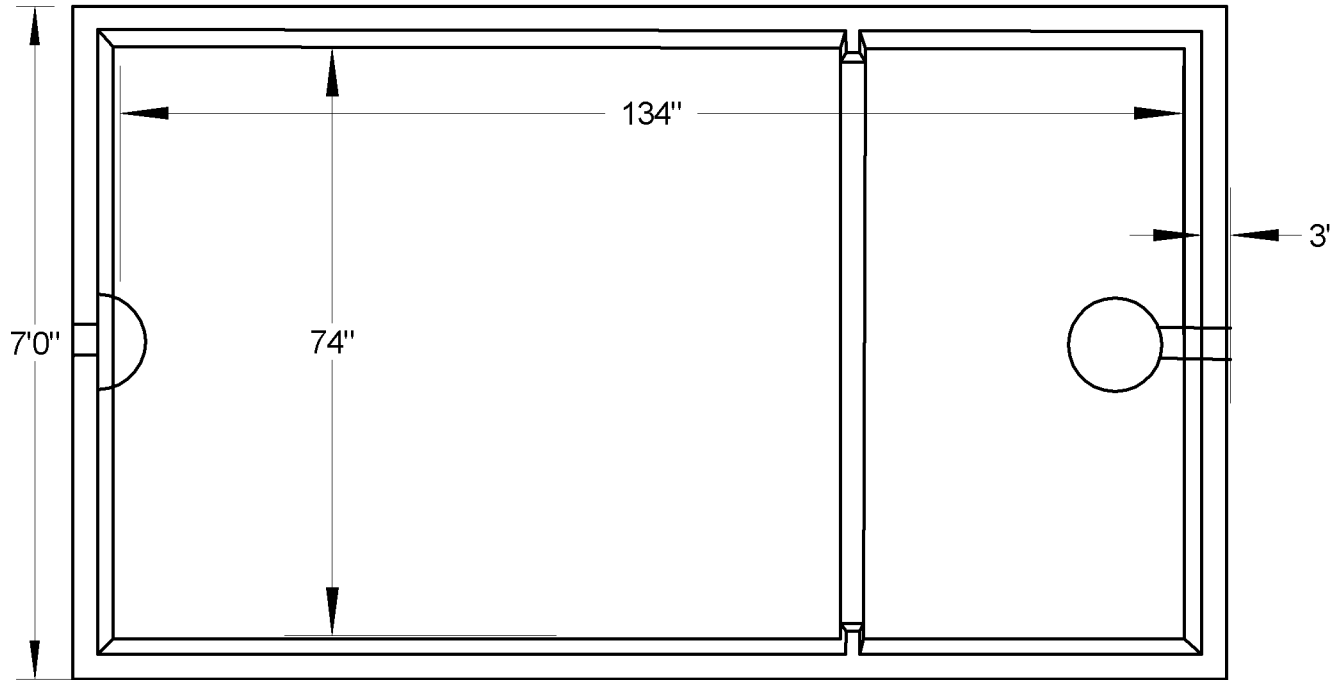


AL'S 2000LP

(ALS 2000 S, H, or P)



Model 2000LP Septic, Holding,
Grease Interceptor, Pump Or Siphon

2082 Gal. Septic 2167 Gal. Holding

995 G.P.D. When Used As A Septic
Tank Based On A 3 Yr. Service
Interval.

96" Max. Depth Of Bury

DIMENSIONS:

Length: 12'0"

Width: 7'0"

Height: 75"

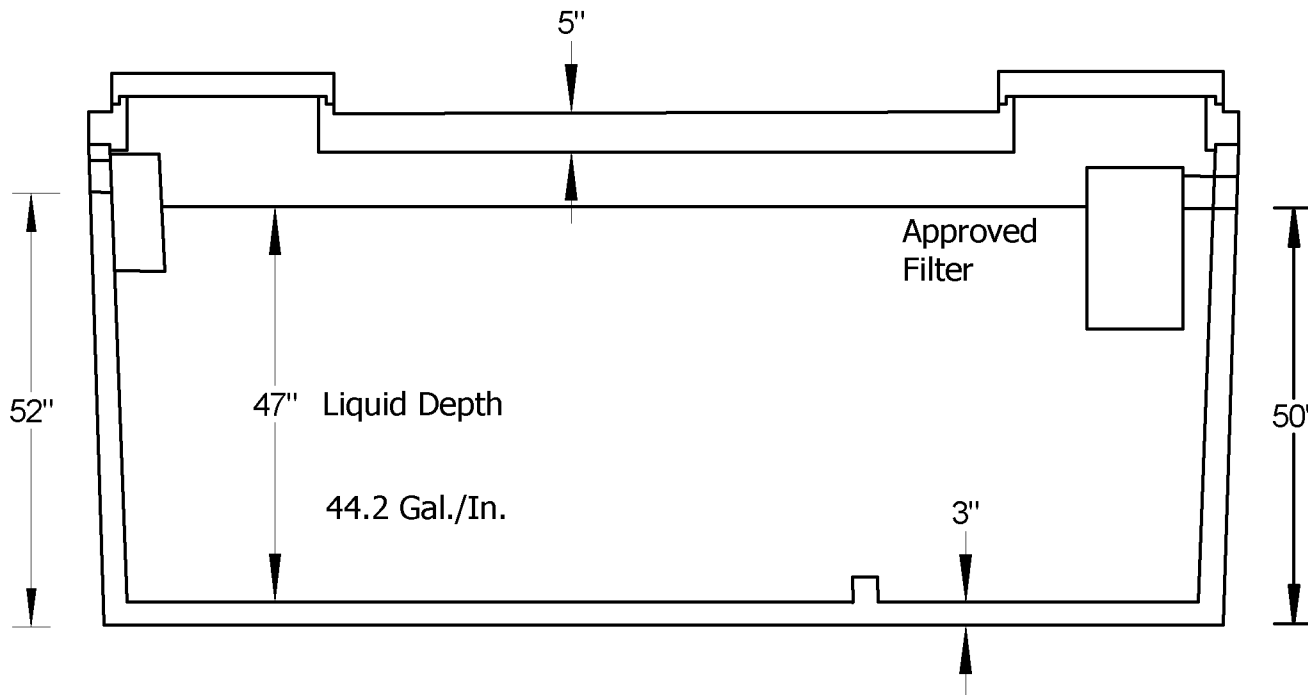
Below Inlet: 52"

Below Outlet: 50"

Tank Weight: 9396 lbs.

Cover Weight: 5292 lbs.

Total Weight: 14688 lbs.



AL'S 2000LP

AL'S Concrete Products, Inc.
800Townhall Road . La Crescent, MN 55947

507-895-4509 1-800-982-9263 507-895-6805 Fax

www.alsconcreteproducts.com