

AL'S 1000LP Rect. Pump Chamber

Model 1000LP Rect. Pump Chamber

1014 Gal. Pump Chamber

96" Depth Of Bury

DIMENSIONS:

Length: 7'8"

Width: 7'0"

Height: 58"

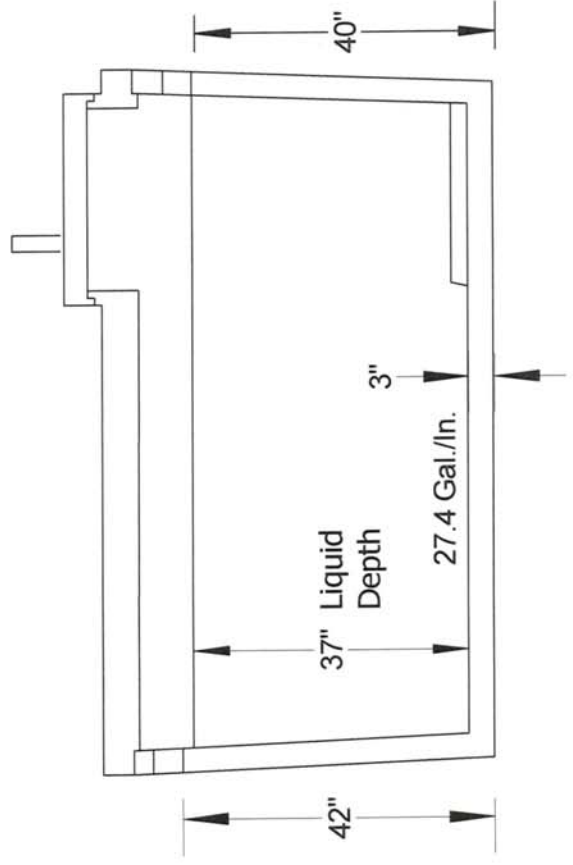
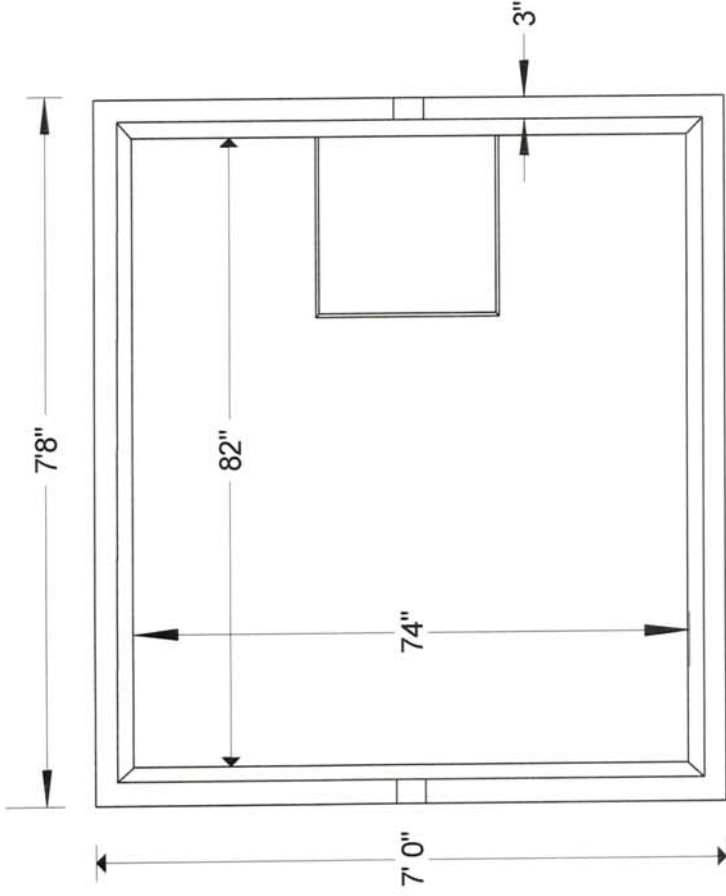
Below Inlet: 42"

Below Outlet: 40"

Tank Weight: 5730 lbs.

Cover Weight: 3383 lbs.

Total Weight: 9113 lbs.



AL'S 1000LP Rect. Pump Chamber

AL'S Concrete Products, Inc.
800 Townhall Road, La Crescent, MN 55947

507-895-4509

1-800-982-9263

507-895-6805 Fax

www.alsconcreteproducts.com