

AL'S 8'6" T-Panel

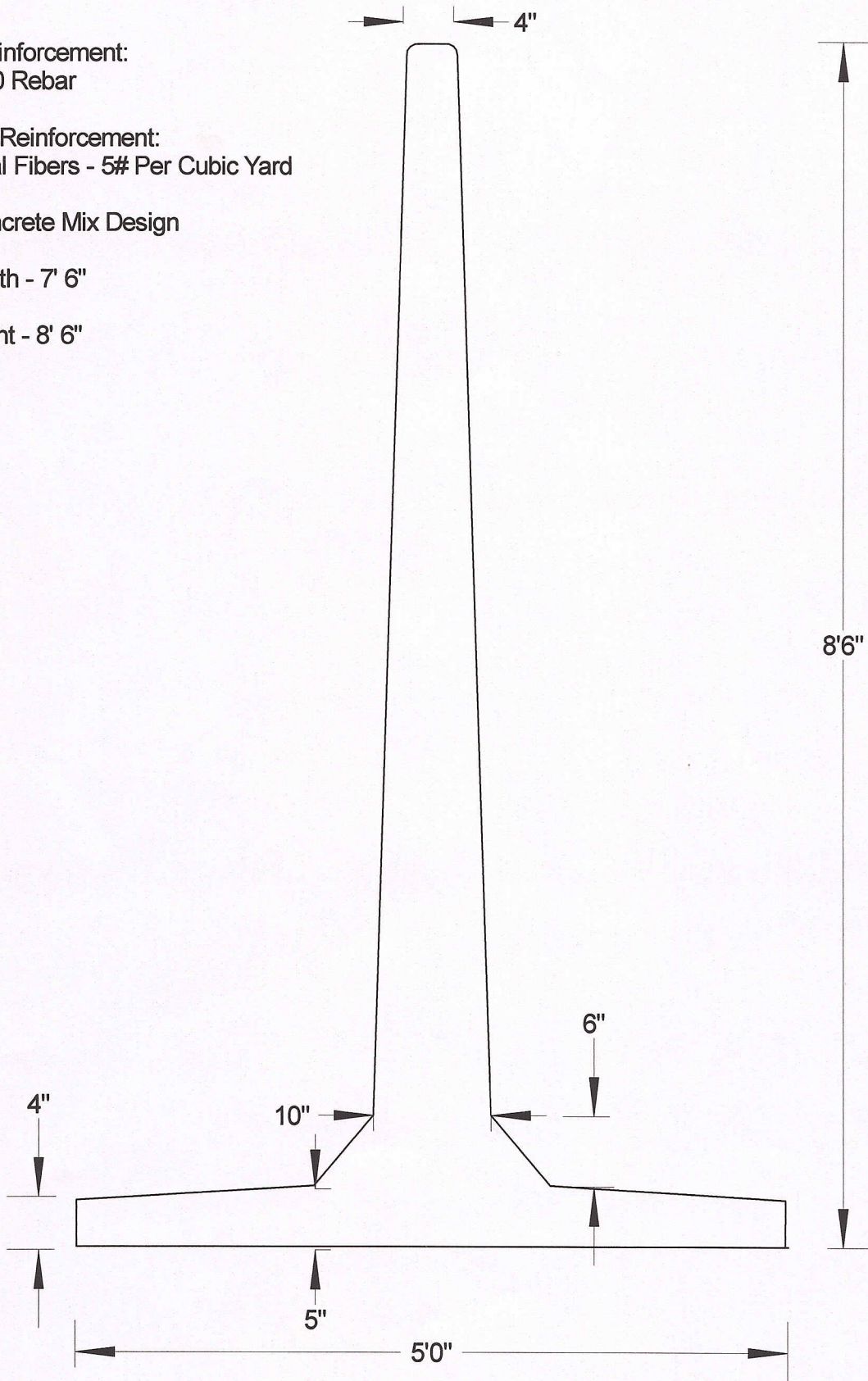
Primary Reinforcement:
Grade 60 Rebar

Secondary Reinforcement:
Structural Fibers - 5# Per Cubic Yard

6000# Concrete Mix Design

Panel Length - 7' 6"

Panel Height - 8' 6"



AL'S Concrete Products, Inc.
800 Townhall Road . La Crescent, MN 55947
507-895-4509 1-800-982-9263 507-895-6805 Fax
www.alsconcreteproducts.com