

# AL'S 12' T-Panel

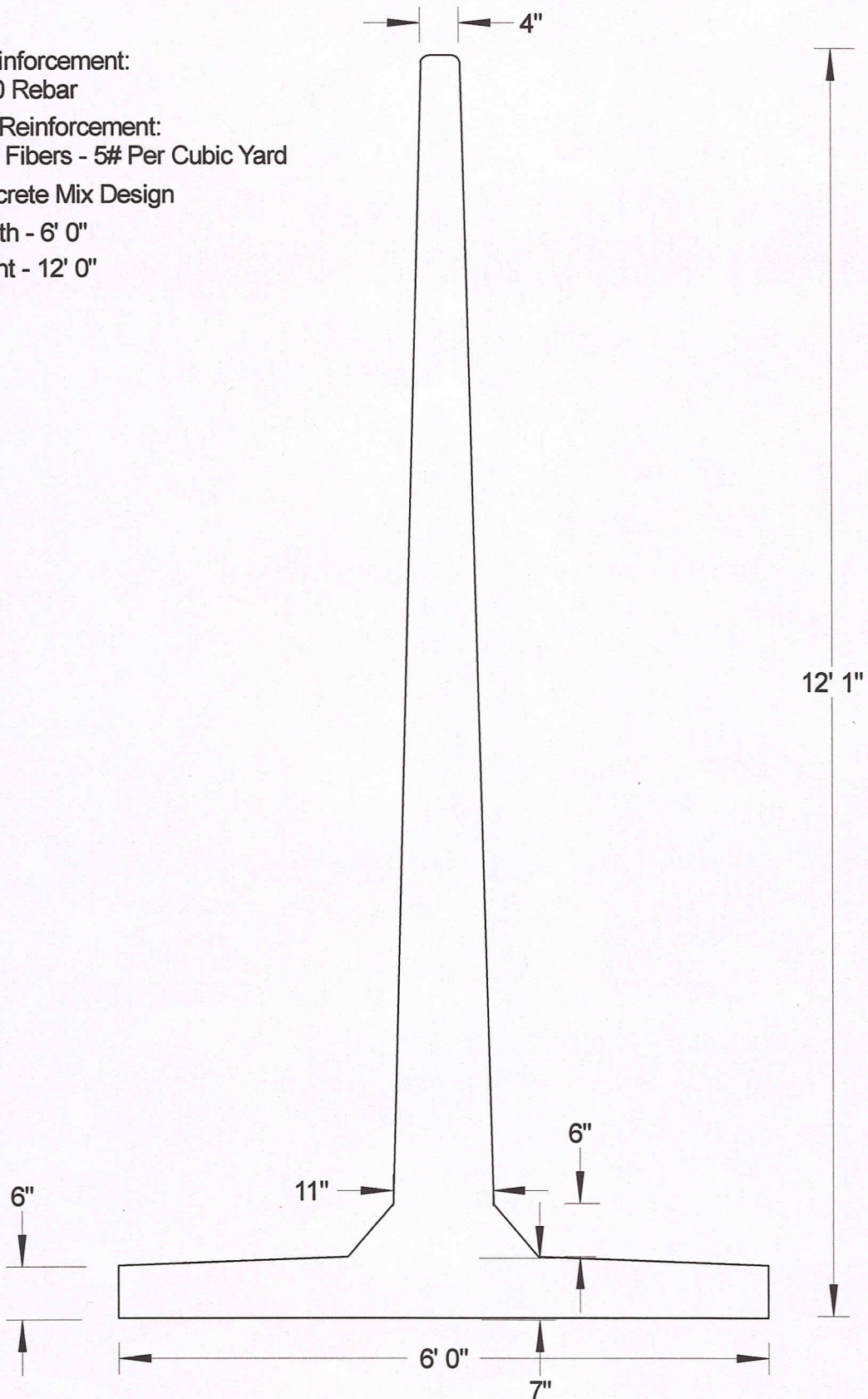
Primary Reinforcement:  
Grade 60 Rebar

Secondary Reinforcement:  
Structural Fibers - 5# Per Cubic Yard

6000# Concrete Mix Design

Panel Length - 6' 0"

Panel Height - 12' 0"



**AL'S Concrete Products, Inc.**  
800 Townhall Road . La Crescent, MN 55947  
507-895-4509 1-800-982-9263 507-895-6805 Fax  
www.alsconcreteproducts.com